

THE ARCH

Putnam County Museum Magazine



PUTNAM COUNTY MUSEUM

Bridging Generations. Connecting Communities. Preserving Past.

THE ARCH

VOLUME 15 ■ JANUARY 2019 ■ ISSUE 1



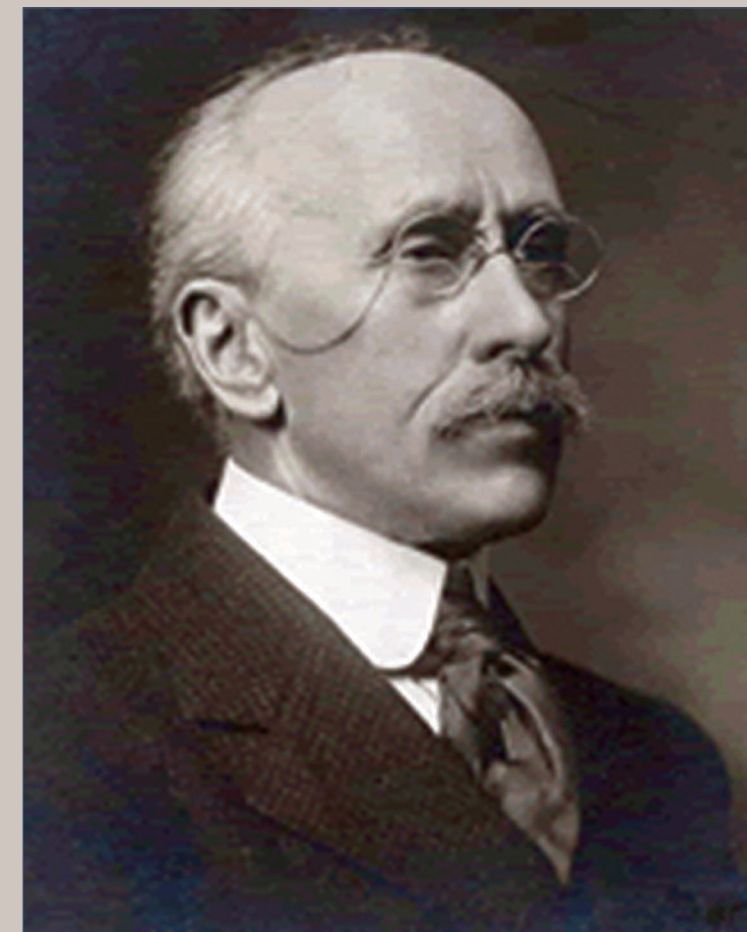
Picture of the current CSX Railroad grade near Happy Hollow in Madison Township, taken from the original grade of the Indianapolis and Terre Haute R. R. More on this in the next newsletter.

The mission of the Putnam County Museum is to collect, preserve, and interpret the natural, historical, and cultural heritage of the county.



Putnam County Museum

DR. EDWIN POST



Dr. Edwin Post, the longest serving faculty member of DePauw University near the end of his career, after he had served as the first dean of the college. He retired in 1932, having served 53 years continuously as professor of Latin, a record probably never to be broken.

IN THIS ISSUE...

- Page 3 *Today's Putnam Personalities*
- Page 4 *Ghost Towns and the Flood*
- Page 5 *Vital Volunteer*
- Page 6 *S. C. Corwin*
- Page 7 *Illustrated Atlas photos*
- Page 8 *E. C. Atkins*
- Page 9 *Presidential Ponderings*
- Page 10 *Elisha Cowgill*
- Page 11 *Coming Events*
- Page 12 *Happy Hollow*



PUTNAM COUNTY MUSEUM
1105 N. JACKSON STREET
GREENCASTLE, INDIANA 46135

Nonprofit Bulk Rate
US Postage Paid
Permit No. 5
Greencastle, IN 46135

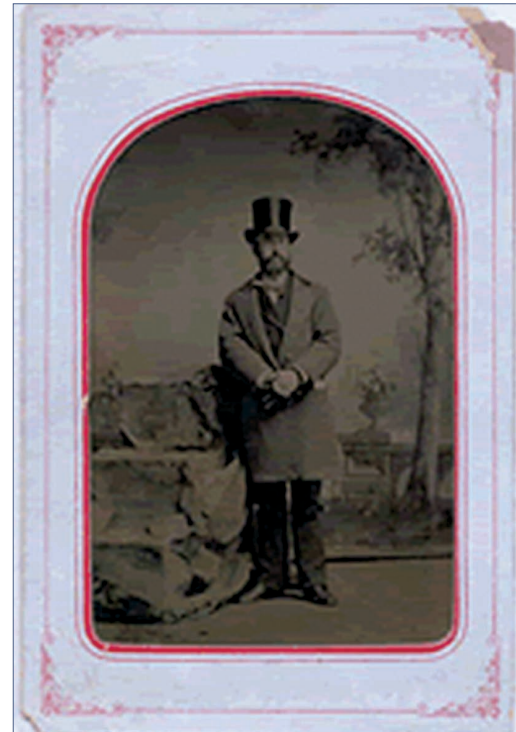
PROFESSOR EDWIN POST

By Larry Tippin, Putnam County Historian

Source: DePauw University, A Pictorial History
<https://library.depauw.edu/library/archives/ehistory/chapter2/epost.html>

Edwin Post, who held the chair of Latin language and literature from 1879 to 1932, the longest continuous period of service as a full professor of anyone teaching at the university before or since, was born in Woodbury, N.J. in 1851. He received an A.B. in 1872 from Dickinson College, which granted him an A.M. in 1875 and honorary degrees of Ph.D. in 1884 and LL.D. in 1927. Before coming to Greencastle he was a teacher and administrator at a private seminary and held a Methodist pastorate in New Jersey. He took two years' leave from DePauw in 1886-88 for advanced study in Berlin and Bonn and became one of the most scholarly members of the faculty. He was awarded one of the first sabbaticals in 1910. He found time during his busy career to publish scholarly articles as well as two books, Latin at Sight and Epigrams of Martial.

His diaries, which he kept from the age of 10 to his mid-30s reveal his scholarly concern and his distaste with the heavy emphasis on the physical expansion of the university in the early DePauw period:



Professor Edwin Post came to Indiana Asbury as professor of Latin in 1876. This picture was made from a tin-type made about 1886.

The policy by which the future is to be determined seems to be the "big show policy," big buildings, crowds of matriculates, while scholarship, through tests of work are to be subordinate.

From 1880 to 1896 he was librarian, reorganizing the books saved from the West College fire and personally cataloging them and for the first time establishing regular library hours. Vice president from 1896 to 1903, he was then named the first dean of the college. As professor of Latin he initiated a "seminarium" for advanced students memorialized in a series of annual photographs. A member of Phi Beta Kappa and the social fraternity Phi Kappa Psi, Post was a popular teacher who in 1924 received the first leather medal for service to the university.

He died in Greencastle a few months after his retirement in 1932 at the age of 81, leaving behind him a memorable heritage of scholarship and devotion to teaching.



Post at the end of the 19th century, when he had been promoted to librarian and vice president.

COMING EVENTS

WISH LIST

1. Donations for the restoration of our three new Elisha Cowgill paintings from the 1880's
2. Gift cards for Amazon, available at Kroger
3. Visa gift cards, also available at Kroger
4. Paper goods including copy paper, boxes of tissue, paper towels and bath room tissue
5. Gallons of white vinegar

.....

GIFTS RECEIVED IN MEMORY OR IN HONOR

Adelaide & David Davies in memory of Sally Gray, founding member

Anonymous in memory of Barbara "Ruth" Timm, mother of board member, Vicki Timm

COMING EVENTS

Don't miss.....

- The Paintings of Elisha Cowgill: Scenes of Putnam County, on display **now** in main lobby
- McCammack Founding Family Opening Presentation, **January 19th**
- Rediscovering Putnam County Tiny Towns Presentation By Putnam County Historian, **January 24**
- Indiana Raptor Bird Show **February 2nd**
- Student Art Show Opening & Awards **March 3rd**
- Annual Membership Meeting **March 17th**
- Antique Tractor Show **May 18th**
- Arrowhead Roadshow June date **to be announced**
- Discover Putnam County's tiny towns and villages. Larry Tippin, county historian, will be presenting a series of talks that will introduce us to the villas, burgs, and settlements that time has passed by. Some still exist, others are the stuff of our folklore. The first three dates for these talks are **January 24, February 28th and March 28th**. These will be held at the Museum and start at 6:30. Carpentersville, Vivalia and Horntown will be discussed in January. Save the dates!

GHOST TOWNS AND THE FLOOD OF 1875

By Steve Bonnie

In John Baughman's book, *Our Past, Their Present*, he talks about ghost towns and lost communities. Among the several that he mentions, I want to talk about the demise of two for which I have some historical information.

Pugville was located in Washington Township, about a mile east of the Putnam-Clay county line on the Old National Road. This would place it downstream of Reelsville along, or near Big Walnut. It may have also been referred to as Plug City, or Plug Town.

Barnett Mill, or Barnett's Mill, was located south of present-day U.S. 40, and south of the Brazil Water Works well field.

I mentioned the Flood of 1875 in the title, so I need to interrupt my story for a moment and talk about that flood. Little was written at the time about local damage. There were contemporary newspaper articles that detail damage done to the Vandalia Railroad. The National Weather Service provides us with the following:

Historic Crests:

- (1) 30.00 ft on 08/01/1875
- (2) 24.80 ft on 03/26/1913
- (3) 23.53 ft on 01/04/1950
- (4) 23.48 ft on 06/07/2008
- (5) 23.39 ft on 06/29/1957
- (6) 22.56 ft on 04/19/2013
- (7) 22.19 ft on 05/08/1961
- (8) 22.04 ft on 03/05/1963
- (9) 21.59 ft on 12/30/1990
- (10) 21.58 ft on 01/06/2005

Record flood occurred in August 1875 and was estimated at 30 feet. With the completion of Cagles Mill Dam in 1953, it is unlikely that this height will ever be reached again. The river is nearly 1 mile wide and would submerge SR 46 & 59 by 2 feet. Great rural destruction occurs. Many rural evacuations, all roads in the flood plain and all levees are overtopped. Most river cabins and other structures in the flood plain are swept away. Residents on high ground are isolated.

As you can see, August 1875 was catastrophic. The 1913 Flood is the next highest crest, at least in the Eel River bottoms. However, it was fully five feet less than 1875. When you drive through those river bottoms and try to imagine that much water, it is almost incomprehensible. Whenever I approach the Dick Huffman Covered Bridge, which is below the location of the former Barnett Mill, I am always amazed at how high it was built above the valley floor. It was also built in 1880. Coincidence? I

think not. I firmly believe that the Big Walnut/Eel River Valley was essentially torn away by the flood, which started with rain on July 31, 1875. In old newspaper articles, it is often referred to as "The August Freshet."

For instance, an article in "The Daily Banner," dated August 3, 1942 quotes Charles Huffman, who as a boy lived in the Big Walnut bottom downstream from present-day Wildwood Bridge. He said, "All the low ground along the stream from northeast Putnam down to the southwest corner, was inundated from hill to hill." Also, it was reported that 15 water powered grist mills were destroyed and swept away.

In a December 24, 1941 article "The Daily Banner" quotes a former Reelsville resident, George Fox, who was living in Greencastle by this time. According to Mr. Fox, "I saw the old Reel Mill which had been torn from its foundations, wash down against the old railroad bridge, and it looked like the bridge would have to give way, but the mill broke up and washed away in pieces and that saved the railroad bridge."

Plug City was apparently located on each end of the National Road bridge over Big Walnut just downstream from Reelsville. According to an article in "The Greencastle Daily Banner," dated May 10, 1928, and comments attributed to a Mr. Foster Pickett, Plug City was washed away by the August freshet of 1875. Apparently, there was a frame structure on the west end of the bridge that was saved because the owner wrapped a cable around it and secured it to the railroad tracks. Hence, the building was able to float and ride out the current. Interestingly enough, this structure would be what we call a liquor store today.

I have heard a story that Barnett Mill was deliberately destroyed because of a disease outbreak. I have not found any documentation of this story, although that does not mean it did not occur. What I am certain of is this. Due to its location, whatever was left, was washed away in August of 1875.

I hope to write more about the ghost towns, grist mills, and the 1875 flood in future articles. Anyone who may have additional information about any of these is urged to contact the Museum. I will leave you with one last thought. Of the remaining 9 covered bridges in Putnam County, none were built prior to 1875.

~ ~ ~



PRESIDENTIAL PONDERINGS

The old saying that time flies when you are having fun must be true. This will be my last "Presidential Ponderings" as I am completing 3 years as your president and will be a victim of term limits as I have served six years on the board. It has been great fun and the time has flown by.

We have come a long way in the past 3 years—from being renters with an eviction notice to being building owners with new signage, a well-lighted and lined parking lot, a huge new multipurpose room, all new LED lighting, and a growing collection of artifacts! All of this has been made possible through the efforts of a superb executive director and her assistant, a visionary board, numerous hardworking volunteers, and the generous support of you, our members. Before I leave office you will see one more improvement—we WILL have warm rest rooms!

So much for old news. What is new at your Putnam County Museum? Step inside the art walk and you will discover a fantastic exhibit of early paintings by Elijah Cowgill dating back to the 1800's. See more info elsewhere in this issue. Board member Gwen Morris was instrumental in making this exhibit happen. She tirelessly "bugged" the county commissioners to loan the paintings from the courthouse and the staff at DePauw to loan the paintings in their collection. She then worked with our exhibit chair, Mickey Meehan, to hang the exhibit. It is amazing how much better the paintings look in our new lighting. It is a very "museumy" (my new favorite word) exhibit!

Walk a little further and you will see a fabulous silk quilt from our collection displayed on a new large quilt board built by our volunteer carpenter extraordinaire, David Boswell. Across from the quilt you will notice that the walls have been newly painted including a bold accent wall in our board area that truly makes our paintings "pop".

As you enter our multipurpose room you will see that our railroad collection continues to grow. Thanks to donations from Jinsie and Malcolm we have been able to acquire several new "museumy" display vitrines. One has been filled with Monon china, silver, and glassware to take you back to the elegance of dining in the railroad dining cars. A gift from the Gough family to preserve the history of the railroads has enabled us to acquire some extremely rare pieces. Coming soon will be a similar display of pieces from the Pennsylvania R.R. Down the road we may want to have a dinner featuring recipes from the railroad dinning cars!

Now would be a great time for you to join the fun at the museum. We need docents, committee members, help cataloging our collection, planning events, maintenance, cleaning, gardening, or ??? You, too, can be "museumy"!

Warren Macy

MEMBERSHIP

If you have not renewed your membership or wish to join, please clip this form and send it with your dues to Putnam County Museum, 1105 North Jackson Street, Greencastle, IN 46135

Membership dues are an essential source of funding for the Museum's exhibits, programs, and conservation of our precious artifacts and stories.

- ____ HEIRLOOM MEMBERSHIP \$1000
- ____ TREASURE MEMBERSHIP \$500
- ____ COLLECTIBLE MEMBERSHIP \$250
- ____ ARTIFACT MEMBERSHIP \$100
- ____ FAMILY MEMBERSHIP \$50
- ____ INDIVIDUAL MEMBERSHIP \$25

Name _____
Address _____
City _____ State _____
Zip _____
Email _____@_____
Phone _____
Preferred method of contact (choose any or all)
__Mail __Email __Phone _____

Have more fun and help accomplish the Museum's work by volunteering. Check any areas of interest:

- | | |
|---|--------------------------------------|
| <input type="checkbox"/> Docent | <input type="checkbox"/> Office help |
| <input type="checkbox"/> Events | <input type="checkbox"/> Publicity |
| <input type="checkbox"/> Gift Shop | <input type="checkbox"/> Education |
| <input type="checkbox"/> Collections care | <input type="checkbox"/> Fundraising |
| <input type="checkbox"/> Processing artifacts | <input type="checkbox"/> Kids Club |
| <input type="checkbox"/> Exhibits | |
| <input type="checkbox"/> Membership | |
| <input type="checkbox"/> I have a story for the oral history collection | |
| <input type="checkbox"/> Other tell us how you would like to help _____ | |

S. C. CORWIN IN THE 1879 ILLUSTRATED ATLAS OF PUTNAM COUNTY

By Larry Tippin, Putnam County Historian

Did you ever notice that most of the illustrations in the 1879 Illustrated Atlas of Putnam County contain a tall man with a long coat and wide brimmed hat, typically in a prominent place such as the foreground? A notice in the December 26, 1878 edition of the Greencastle Banner indicated that "S. C. Corwin, of Chicago, a stock and landscape sketcher of reputation, has just finished a large pencil sketch of Asbury, to be inserted in the Illustrated Atlas of Putnam County, which is now in process of making by J. H. Beers & Co., of Chicago."

The 1879 Putnam County Atlas was accepted by County officials early that year as noted in an article in the Greencastle Banner on February 13, 1879. J. H. Beers & Co. also published the Illustrated Historical Atlas of Hendricks County and the Atlas of Montgomery County, both in 1878, as well as various other similar publications throughout the Midwest. We can typically see this same tall man with the broad brimmed hat in the illustrations in those publications as well. Often, that figure, as well as others, will be seen riding a horse or in various types of horse drawn carriages, giving the impression of movement and action. None of these Atlases included the source of information, nor do they credit the illustrations. But it appears evident that the sketches in all three of these publications, as well as others throughout the Midwest published by J. H. Beers & Co. were very similar and were likely created by the same person. I have heard some suggest that this tall man with the broad brimmed hat might have been S. C. Corwin himself, he may have taken the opportunity to place himself in the illustrations.

For the first time since 1879, the Putnam County Historical Atlas is available in full color!

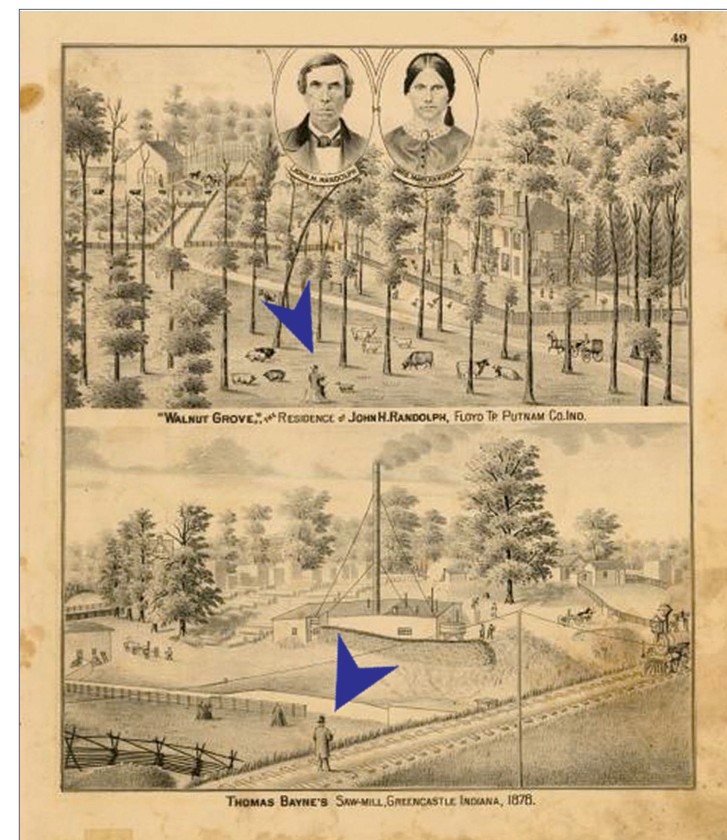
Re-created with scanning technology, The 1879 Historical Atlas has been reprinted, true to our leather-bound original, right down to the mellow aging of the paper. The details of the fine pen and ink drawings are reproduced exactly; the portraits of citizens are of remarkable aspect; Gillum Ridpath's history of the county, its townships and its notable citizens are faithfully reproduced.

The plat maps of the townships and towns are in full color and all notations that appear under colored ink are now legible. On top of all this, the book is indexed (thank you Marilyn Clearwaters!) by both names of people and places, but also by land holders. And of course, the plat maps themselves list the owners name and the amount of acreage. This is a must-have book for genealogists, historians and those of us who enjoy a good map. The reprint measures 15.5" X 12.75", which is a bit smaller than the original, but larger than previous reprints.

County Historian, Larry Tippin, has written a new preface to this 5th edition. Malcolm Romine and anonymous donors helped with the funding needed for this project to be completed prior to Putnam County's Bicentennial in 2021. The print run is limited and the cost per copy is \$85. Contact the Museum for availability.

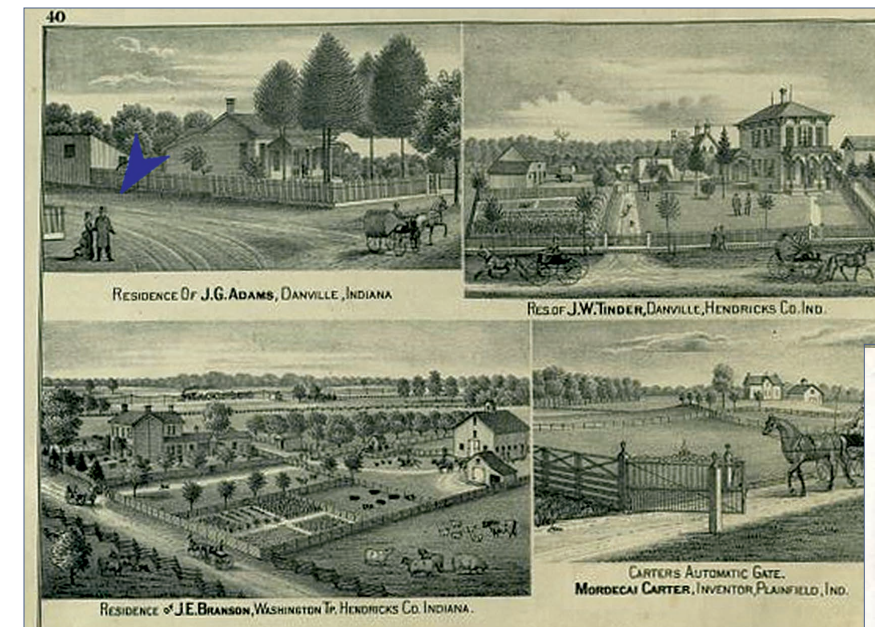
WWW.PUTNAMCOUNTYMUSEUM.ORG

S. C. Corwin, of Chicago, a stock and landscape sketcher of reputation, has just finished a large 15x21 pencil sketch, India inked, of Asbury, to be inserted in the Illustrated Historical Atlas of Putnam County, which is now in process of making by J. H. Beers & Co., of Chicago. The sketch does the building and grounds justice, and is a specimen of really fine sketching.



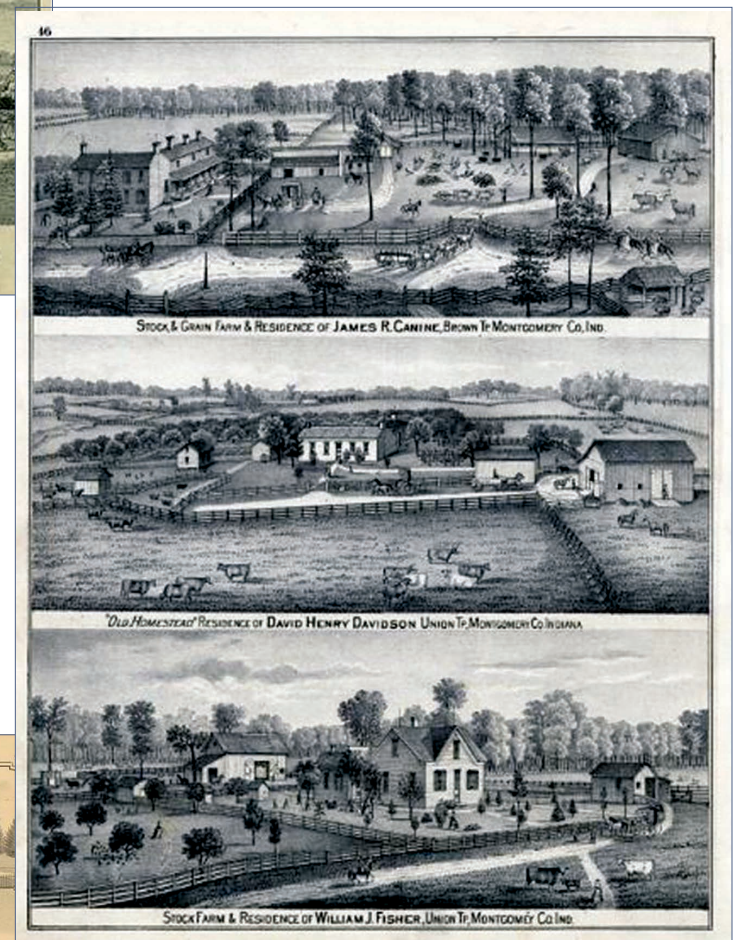
Putnam County 1879 Atlas page 49.

PHOTOS FROM 1978 & 1979 ILLUSTRATED ATLASES

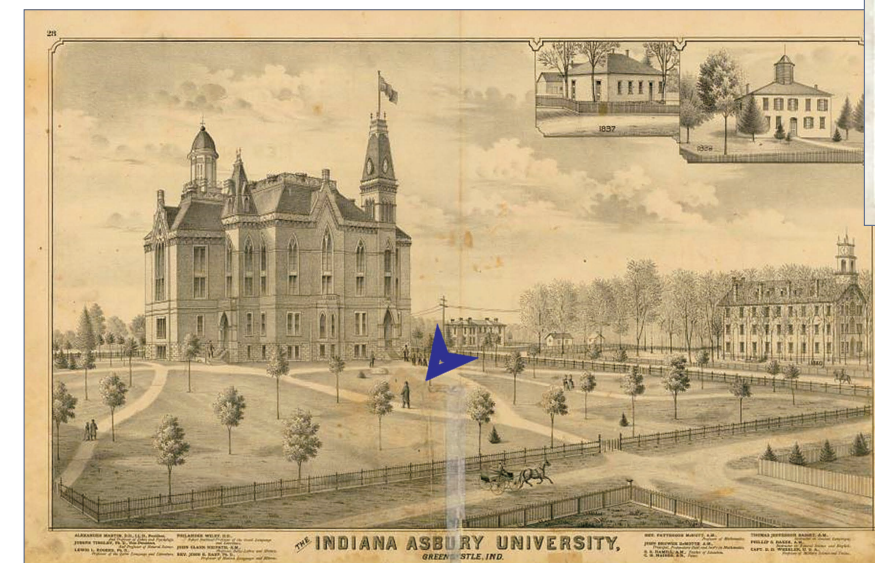


Hendricks County 1878, page 40 of the Illustrated Historical Atlas of Hendricks County.

Atlas of Montgomery County 1878 page 46



Putnam County 1879 Asbury Sketch page 28.



WWW.PUTNAMCOUNTYMUSEUM.ORG

765-653-8419

765-653-8419

E. C. ATKINS CROSSCUT SAW TOOLS

By Steve Bonney

I volunteer as a Docent here at the museum, which means that I set at the Welcome Desk 3-4 afternoons a month. The unique thing is this: You never know what may come through the door, and what path that might lead you on.

Several weeks ago, a retired couple came in. They had followed IBM to Pennsylvania and were back in Greencastle clearing out her father's house. They asked if the Museum would like to have a substantial wooden tool chest, which contained a varied assortment of old, miscellaneous tools. The Museum accepted their gift and an inventory was done of the tools. As I was looking through the inventory and the tools, I found three items that were especially interesting.

Two of these tools were clearly marked "E. C. ATKINS & CO IND PLS IND." This led to some research about Atkins, and I found that Elias C. Atkins was a pioneer in the perfection of saws. Elias C. Atkins was born in Connecticut in 1833. By 1856 he had relocated to Indianapolis and founded his company. Various catalogs from his company have been published online, and from these I found a match for the tools that were donated to the Museum.

According to a page from the 1923 Atkins Catalog, these pieces are part of the Atkins Perfection Saw Tool Set for crosscut saws. The Atkins Catalog states that the Perfection Tool would be used as a side file, jointer, and raker gauge. The setting block was used in conjunction with the hammer to establish the proper set of teeth in a crosscut saw. Unfortunately, the setting block has been broken. The hammer is an exact replication, but it was made by the

Van Camp Hardware and Iron Works of Indianapolis, IN. I do not know if Van Camp made hammers for Atkins. Also, worth noting is that Van Camp Hardware and Iron Works preceded the Stokely-Van Camp Company. It was the same family that controlled both companies, and for a time they used the same trade mark.

The donors of these items did not know any of the history behind them. It is likely that these tools belonged to either her grandfather or great-grandfather, or perhaps both of them. The patent dates, which are cast into the Perfection Tool, as well as the need for a sharp crosscut saw, would support that time line.

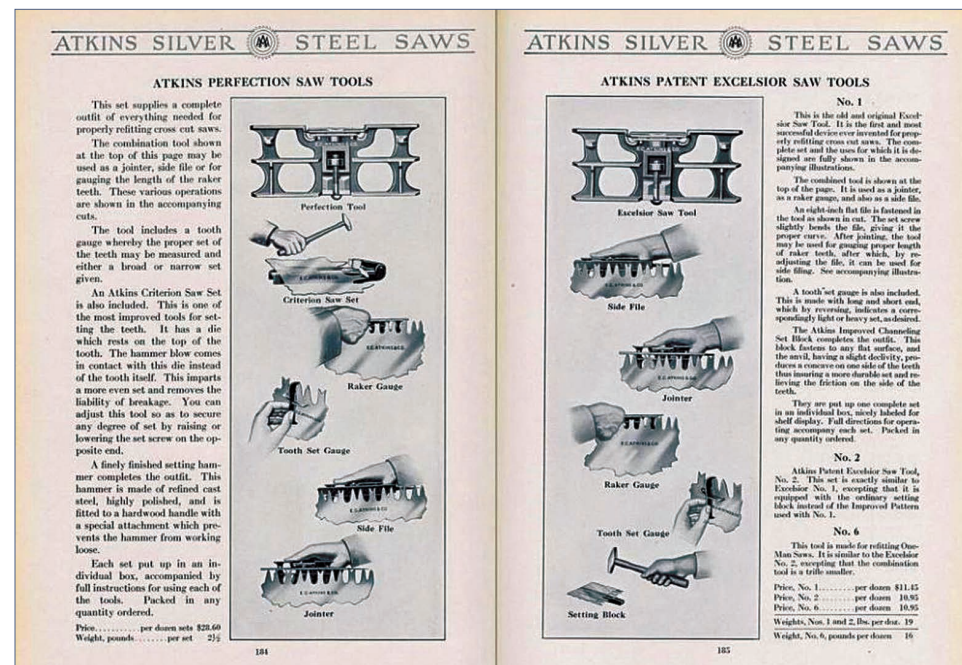
I spoke earlier about a path you might find yourself on, and that leads me to this one. E. C. Atkins was a premier manufacturer of all kinds of saws, including a large selection of saws, both circular and band, that would be unique to a large mill, such as the Barnaby Saw Mill in Greencastle. According to John J. Baughman's book, *Our Past, Their Present*, the Barnaby Saw Mill continually expanded and modernized its equipment. With a premier saw manufacturer, no farther away than Indianapolis, would the Barnaby Saw Mill have utilized Atkins saws?

I wish I knew the answer to this question, but I don't. So, I will ask a question of the followers of the Museum, readers of this article, and the community. If you know of any information about the Barnaby Saw Mill, its employees, or its equipment, including Atkins saw tools, please contact the Putnam County Museum.



Atkins Tools

Atkins Catalogue



VITAL VOLUNTEER

By Megan Phipps

Mrs. June Brattain is one of Putnam County Museum's biggest ambassadors. June has had an appreciation of history her whole life. June has always made sure to get the word out about the museum in general as well as any special events hosted by the museum. June has been connected to the museum from day one of our existence. She has always had a fascination for museums since she was a young girl.

We consider ourselves so very lucky to have June as a member of our museum family and one of our biggest cheerleaders.

June's affiliation with the museum started with a meeting in 2004 at DePauw University. Many of our surrounding communities outside of Putnam County were fortunate enough to have local museums, her question was why isn't Putnam County included in that list? The museum became because of so many involved members and supporters. When it became time to volunteer in specific areas, June found that Friday afternoons had a recurring need for docents. She had found her calling with the museum. June takes time from her busy week to dedicate every Friday afternoon as a docent to the museum.

As a docent, June is available to give personalized tours of the museum as well as having the opportunity to inform those that walk through our door about any of the goings on at the museum. June greets every visitor with a warm, kind smile that brightens up every visit to the museum. As a lifelong member of the Putnam County community, June is an asset in knowledge about our community. Her involvement and community outreach is priceless to the museum.

June is a quality, top notch volunteer to many other organizations in the Putnam County area. She enjoys her volunteer time at her church, as well as having the chance to

work with clients at Putnam County Comprehensive Services. The Putnam county Public library has also been lucky enough to call June a vital volunteer. June puts all her attention on the task at hand, and her drive for excellence is part of what makes every organization she is connected with a gift to the community.

June is a graduate of Reelsville High School. She has

worked in our community at Dr. Brattain's veterinarian's office and loved the interaction with the local dogs and other furry members of our area. June fills her free time with many of her friends and family. June has had 6 English springer spaniels and currently has Butch, a rascal of a dog as her companion. June enjoys reading a good book and would say her best day would be a day filled with friends, playing cards and a book to cozy up with.

Having June Brattain as one of our amazing volunteers has us at the museum so grateful. June's role in the museum is vital to

our community outreach and interaction. Whether behind the docent desk, attending a meeting, or communicating with the community about the great artifacts we have at the museum as well as events, makes us so proud to call her a member of our museum family. We are blessed to have such a vital volunteer at our side!



Vital Volunteer, June Brattain

Become a Volunteer !

PAINTINGS OF ELISHA COWGILL

By Larry Tippin, Putnam County Historian

Elisha Cowgill (1835-1914) was a noted artist from Greencastle who produced many paintings which are significant to the history of Putnam County. Cowgill was civic minded, serving two terms as city clerk of Greencastle, then as mayor in the 1880's and 1890's.



Putnam County Seminary
Constructed in 1839
Painting by Elisha Cowgill 1835 - 1914

But his most noteworthy achievements were his paintings and artwork. His works include repainting the scenery paintings at the Opera House, and a large eleven by nine feet picture, with many religious scenes, for the College Avenue Methodist Church.

In 1892, Cowgill was awarded a contract by the City of Greencastle to paint uniform house numbers, on bright tin plates with two-inch letters. The November 12, 1885 edition of the Greencastle Times noted that Elisha Cowgill had an art studio in Greencastle that housed many valuable paintings.

Of historical significance, Cowgill painted the first three county courthouses. The first courthouse, a frame structure with a cupola, was erected in 1827-28 and was replaced in 1832 by a one-story brick, hip roofed structure. The third courthouse was constructed in 1848, a two-story brick Greek Revival building designed by Elisha Bramen, a Greencastle architect who designed many local houses and structures. That courthouse was replaced by the fourth county courthouse, a substantial four-story structure which was dedicated in 1905. These paintings, along with others of homes and scenes of local significance produced by Elisha Cowgill, are currently on display in the gallery of the Putnam County Museum. You should come check them out.

Interestingly, after these paintings were hung at the museum, an individual donated several Elisha Cowgill paintings that he had. If you have, or know anyone who has, Elisha Cowgill paintings perhaps you might consider donating or loaning them to the museum for public display.

~~~~~

Continued from page 3

## TODAY'S PUTNAM PERSONALITIES

like the Pied Piper, it helps that there is a bit of food involved. Marla has encouraged Stu in eating healthier food, they are not solely vegetarians, but do watch their diet carefully and as a result Stu has lost several pounds since moving here.

As if he needed more activity, and another release for his talent, Stu started writing novels and has published his fifth novel. The protagonist in all the novels is Clay Arnold who by day is a very nice guy, but at night becomes a righteous vigilante, correcting the injustices of the world.

I cannot fail to pay tribute to Stu for his work with the Summer Music Festival at Gobin Church. It is my understanding that he went to Joanne Kissinger and Eric Edberg a few years back to ask about the program and what the needs were. He told her he would like to help with the financing, if possible, and was immediately called a Godsend. A board was created with 501c3 status and Stu along with others helped to fund the program at the church which has become a summer staple. Performers are now given an honorarium for their time and talents and provided housing at the hotel while here.

Stuart and Marla have created an endowment at the Putnam County community foundation to give something back to the community they love. Stu stated "we feel we owe a lot to the people and the land of Putnam County. He and Marla share the studio and together produce unique and captivating art. They have a strong connection to nature and their art reflects that commitment. "We enjoy giving "artistic life" to an entity that once held "natural life". Visitors are welcome by appointment to their studio north of Greencastle. I have been so impressed with their art, their love of the land and their many gifts to the community. Hopefully, you will take the opportunity to call and make a date to visit.

**Stardust**  
Photography Exhibition by Stuart Fabe

|                                                                              |                                                                                                                        |                                                                                                     |
|------------------------------------------------------------------------------|------------------------------------------------------------------------------------------------------------------------|-----------------------------------------------------------------------------------------------------|
| featuring<br>Music by cellist Eric Edberg<br>cash bar & light hors d'oeuvres | FEBRUARY FIRST - FIRST FRIDAY<br>After Hours Fundraiser<br>6:00 - 8:30pm<br>Putnam County Public Library, Kiwanis room | Proceeds from Photography sales<br>will benefit<br>Putnam County Public Library's<br>Adult Programs |
|------------------------------------------------------------------------------|------------------------------------------------------------------------------------------------------------------------|-----------------------------------------------------------------------------------------------------|

# TODAY'S PUTNAM PERSONALITIES WITH A NOD TO DAVID BARR

By Diana LaViolette

A few miles Northwest of Greencastle, on a lovely 36 acres of land (truly a bucolic pastoral setting), you will find a home of beautiful art work, paintings, photography, a yoga studio, and several chickens, two cats and two dogs. Living comfortably and happily in this idyllic setting is our person of note, **Stuart Arnold Fabe**. I was fortunate recently to spend some time with Stu and the love of his life, Marla Helton, who both enjoy a comfortable and inspired life.

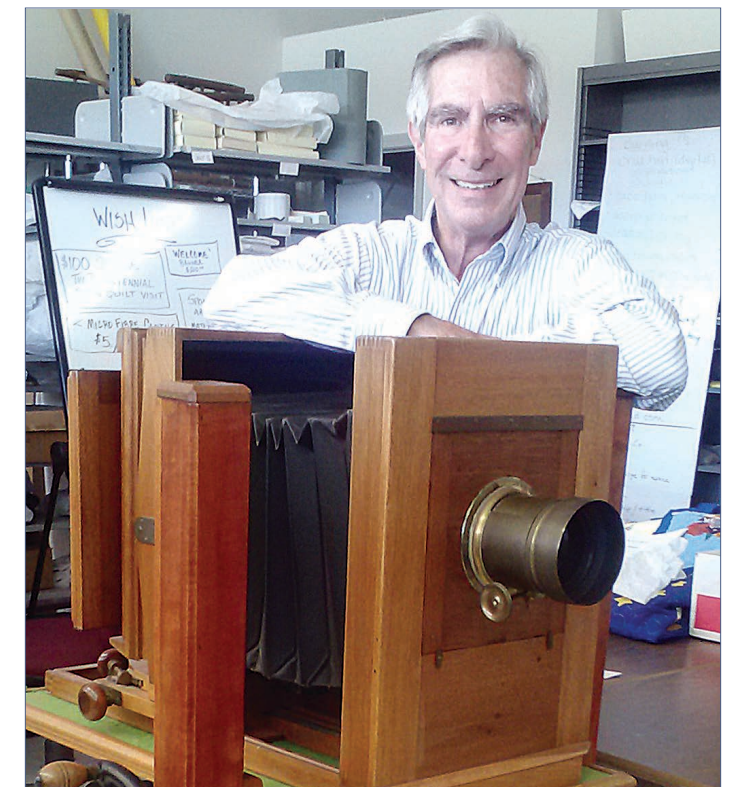
Stuart, commonly called Stu, is a young, amazingly talented sixty-nine-year-old, born in Cincinnati in 1949. His Father was well known for his paintings and as an art professor at the University of Cincinnati {need you wonder where Stu got his interest in art?}. His mother, Miriam, was a devoted wife and mother to Stu and his two siblings, Stu has a Master of Science degree in Corrections from Xavier University in Cincinnati. He had been employed at the Juvenile Court which captured his interest in criminology. He retired as Vice President for Development at the Health Alliance where he helped raise funds for five area hospitals for several years. In addition, he raised funds for the local Boy Scout Council, Children's Hospital Medical Center, Jewish Hospital, as well as the Cincinnati Zoo over a career spanning some thirty years.

After graduation from the University of Cincinnati with a B.A. in English, he had struggled creatively, and became interested in the book "Zen and the Art of Motorcycle Maintenance" finding his interest in the visual world and developed a fascination with photography. He built his own dark room in September of '75, and purchased some modest equipment, in order to develop the skills he aspired to. Ansel Adams influenced him and looking at Stu's photography today you can sense that inspiration. In 1975 he built a dark room with modest photo equipment, purchasing a tripod and a good camera with wide angle lens.

In 2004, Stu went to an art show on Coney Island near Cincinnati and was enchanted (or so I am told) by a lovely woman selling gourds. To emphasize just how much he was attracted to her, he bought eleven of her gourds that very day, which, incidentally, she resold a couple years later. Stu learned that she was going to Lexington for another craft fair. Amazingly, he just happened to visit Lexington, appeared at her booth, and asked her out to dinner. It was the beginning of a beautiful relationship, and in 2005, Stu moved to Indiana to be with Marla.

According to her, he was a "damn city woosy", incapable of gardening and tending to the land. But, with time, he learned to weed and plant, even clean out the back pond. At first, the "city boy" had a bit of trouble adjusting to farm life, questioning the farmer down the road as to his dress and looks,

for it is much different down on the farm. But in time he came to love the pastoral life. And the night sky inspired him - something you can see in his photography and artwork. His skills at photography just grew better and better and he fell in love with that night sky. In the beginning he helped Marla maintain a field of gourds, which would cure over the winter. Then together they would clean and paint them. Stu then learned the skill of gourd weaving. Over the next nine years, they traveled to art shows, marketing the gourds, some of which I was fortunate to see in their art studio. Visiting their home, one quickly becomes aware of the depth of talent both Stu and Marla share.



Stu Fabe with his Professional Studio Camera made by the Century Camera Company..

Eventually, Marla's interest turned to yoga, which she teaches now in her studio, and which meant leaving the gourd world, at least for awhile, because of the multiple classes she teaches. Marla calls Stu a Renaissance man, a philanthropic. She understands that Stu was in a high stress job with Alliance and moving here has enabled him to release his creativity with cameras and find new avenues to pursue. He also has accepted full responsibility for the care of the animals, Stu even has an evening pet parade, where all the dogs and cats follow him,

Continued on page 10